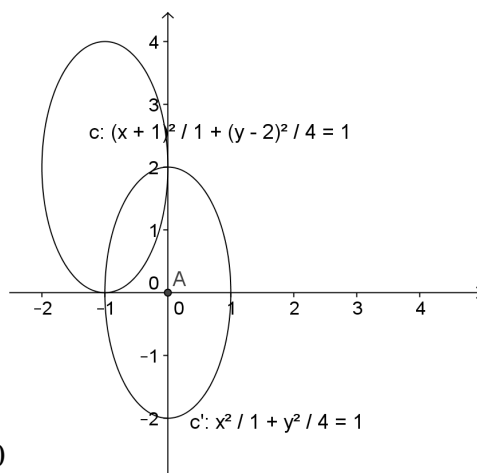


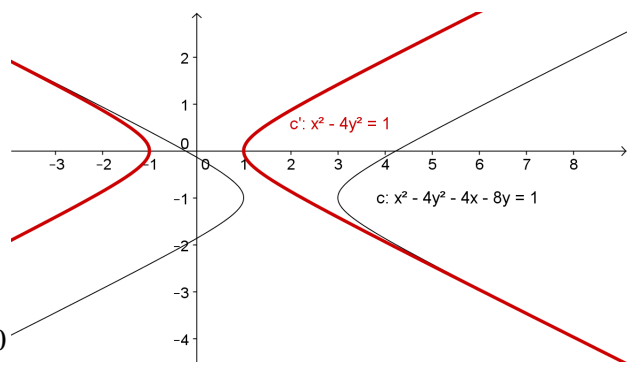
Nome e Cognome: \_\_\_\_\_

Data: \_\_\_\_\_

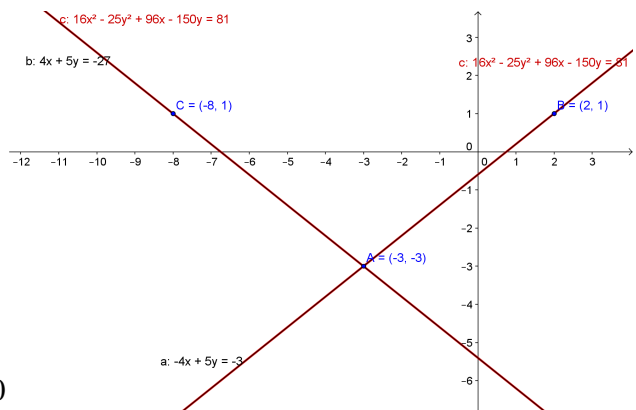
Traccia il grafico delle seguenti coniche dopo averle ridotte alla forma normale:



1)  $4x^2 + y^2 + 8x - 4y + 4 = 0$

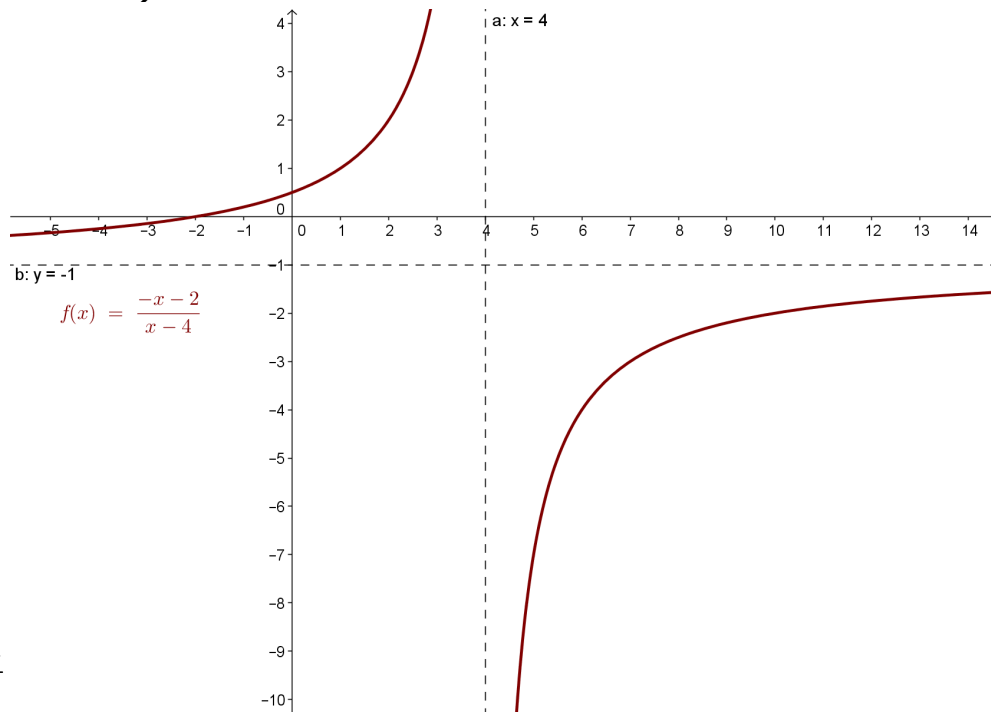


2)  $x^2 - 4y^2 - 4x - 8y - 1 = 0$



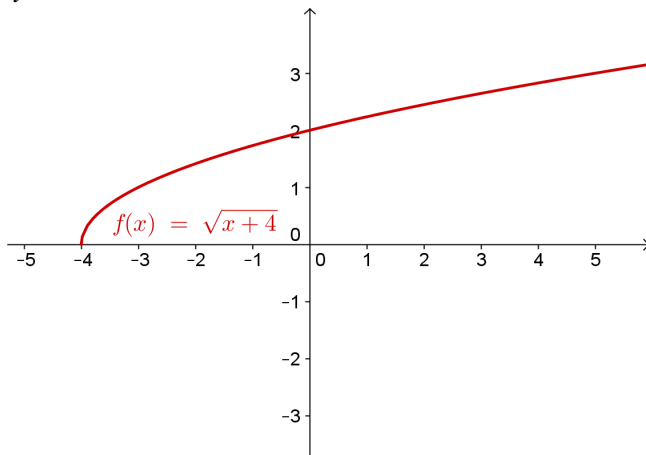
3)  $16x^2 - 25y^2 + 96x - 150y - 81 = 0$

4)  $xy + x - 4y + 2 = 0 \rightarrow$

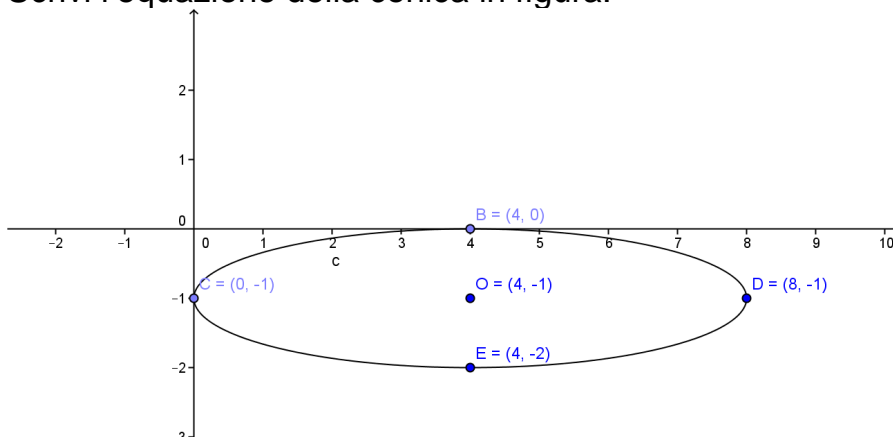


$y = \frac{-x-2}{x-4}$

5)  $y = \sqrt{x+4}$



6) Scrivi l'equazione della conica in figura:



$(x-4)^2 / 16 + (y+1)^2 / 1 = 1 \rightarrow x^2 + 16y^2 - 8x + 32y + 16 = 0$