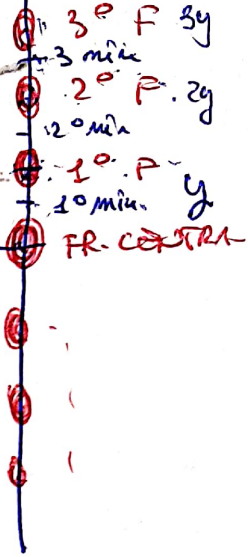
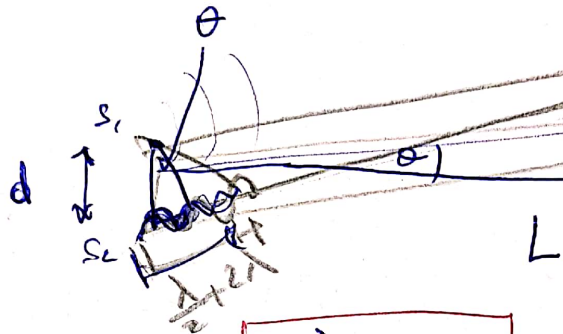


N°2 INTERFEROMETRO di YOUNG (1800)

$y$  ↑

$\lambda = 680 \text{ nm}$  (ROSSO)

$\theta = 0,285^\circ$



RIPASSO →  $\frac{m \lambda}{d} = \frac{y}{L}$  ( $m \in \mathbb{Z}$ )

$m \lambda = d \sin \theta$

INT. COSTRUTTIVA

INT. DISTRUTTIVA.

oppure  $3\lambda - \frac{\lambda}{2}$

$\frac{\lambda}{2} + 2\lambda = d \sin \theta$

$2,5\lambda = d \sin \theta$

$d = \frac{2,5\lambda}{\sin \theta} = \frac{2,5 \cdot 680 \cdot 10^{-9} \text{ m}}{\sin 0,285^\circ} = 3,41 \cdot 10^{-4} \text{ m}$